



# LIVIN' ON THE **EDGE** NEWSLETTER

November 2002

Volume 1, Issue 2

## *Calendar of Events*

Stress Reduction Workshop	November 7	3:00-4:00 pm	Room 1416
Test Anxiety Workshop	November 8	1:00-2:00 pm &	4:00-5:00 pm
	November 14	4:00-5:30 pm	Room 1416
Last Day to Drop a Class or Complete Withdrawal	November 15		
Thanksgiving Vacation	November 28 & 29		

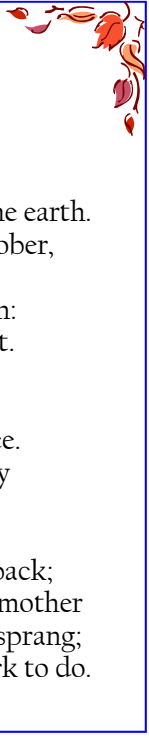
## *EDGE Office*

Central Classroom Complex  
Room 1414 566-3147  
John Bintz-Director  
Brooks Heath -Academic Specialist  
Keith Hovis-Counselor/Advisor  
Roxanna Hughes-Admin. Assistant

## *On The Lighter Side*

### November's Leaves

By Marcia Malby



Yesterdays' royalty,  
Now, the humble servants of the earth.  
Fluttering standards of October,  
Crimson and gold,  
Now lie tattered and torn:  
Crumple beneath my feet.  
Soft brown carpet  
For the garden;  
Damp, rich with fragrance.  
Though the hour of glory  
Has come and gone,  
The task is incomplete.  
They must give something back;  
Must nourish the mother  
From which they sprang;  
They still have work to do.

## *Director's Corner*

"You cannot teach a person anything; you can only help them find it within themselves."

This statement by Galileo centuries ago still rings true today. The concept of finding the answer, skill, or strength lies within the sanctuary of self. The only way a lesson can be taught, whether in life or the classroom, is if the recipient is open and prepared to learn. The manner in which a person learns and the conclusions that are reached may vary, but the core concept remains that everyone can find that personal truth.

The concepts of EDGE are renaissance in nature in providing the assistance to become the well rounded individual. To ask a pertinent question on a thought it is helpful to know a little about many concepts. Become multifaceted in your perspective. Find your wisdom within yourself and through the guidance of the masses along your path. Be constantly on the EDGE of your potential.

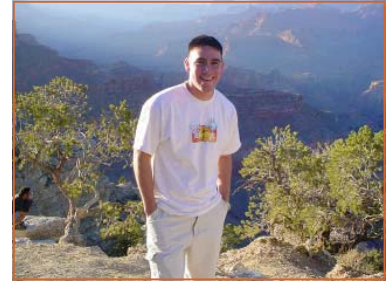
## *What Can EDGE Offer You?*

**Personal Guidance & Counseling:** Guidance relating to college transition, campus/community resources, social and cultural enriching activities, and general personal concerns can be provided by all EDGE professional staff. Limited counseling is also available with qualified staff.



Some of the Gang  
at the Grand Canyon

Left to Right: Stephen Wurtz, Frank Coleman, Brian Begay, Brooks Heath, Keith Hovis & Marcia Tso



Aaron Valdez

### ASU/NAU TRIP

EDGE took several of us to visit Arizona State University (ASU) and Northern Arizona University (NAU) on October 18 & 19. The vast changes of landscapes from Farmington to Mesa gave us vistas of snow-capped San Francisco peaks-from the valley between the peaks swathed in golden aspen trees through to the high desert country of saguaro cactus and on into the palm-lined streets of the city of Phoenix.

The campus of ASU was a vast change. The tour was very interesting and showed us that size and a large population create a very impersonal style. This was appealing to some and disagreeable to others in our group. After the tour, we went to a multi-cultural event in the park at the civic center. There were dancers and food booths representing many different countries. We stayed at an ASU dorm for the night.

The next morning, we drove to Flagstaff for a tour of NAU. The campus tour showed us a completely different university setting. The physical size was much smaller and the style was one of personal attention. The campus was right in town and everything was accessible by either walking or bicycle.

After lunch, we drove to the Grand Canyon. We watched the full moon rise over the rim, into a twilight blue sky that became lavender as the colors washed down the walls of the canyon, and turned deep purple as the night came on. It was awesome! We drove home in the brilliant moonlight.

This was a great trip. We all want to thank EDGE for a grand opportunity.



Grand Canyon



EDGE Staff  
Brooks Heath,  
John Bintz  
& Keith Hovis



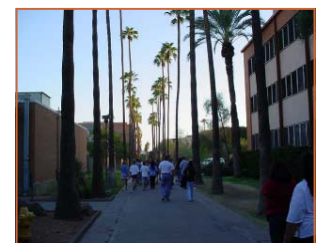
NAU Campus



Inside NAU



ASU Campus



"Palm Row" @ ASU