

## EDGE Graduates 33

What a wonderful and busy year we have had at EDGE. Along with all of our workshops and trips, we have had the pleasure of assisting 33 of our 150 participants with preparing for graduation. EDGE is proud to announce the following people have completed their Associate Degrees at San Juan College:

|                   |                           |                   |
|-------------------|---------------------------|-------------------|
| Mary Ann Hammond  | Eric McClusky             | Jean Marie Tso    |
| Elaine Aloysuis   | Ginger Armenta            | Angela Askew      |
| Kristina Barrett  | Ora Begay                 | Elinor Brown      |
| Regina Burnett    | Cleo JoAnn Caldwell       | Lilly Douglass    |
| Deedra Ellsaesser | Zachary Guilmette         | Theresa Hancock   |
| Ron Harrison      | William "Chip" Hutchinson | Korrie James      |
| Monica Joe        | Melissa John              | Robert Liesse, Jr |
| Rennie McRight    | Mechel Otero              | Helena Patterson  |
| Elsie Pete        | Jammy Sebree              | Sheri Simmons     |
| Connie Smith      | Julie Smith               | Cassandra Speer   |
| Brenda Thomas     | Serena Toledo             | Casey Wade        |
| Willetta Toledo   |                           |                   |

We are very proud of our graduates and encourage their fellow EDGE participants to continue this trail blazing tradition.



Willetta Lilly Reggie Theresa Ora



Chip



Korrie

## EDGE Fall Orientation

**ALL EDGE Participants MUST attend orientation to be in good standing with the program..**

**FRIDAY, August 26, 2005      3:00-5:00 PM      Room 7103**

This will be a potluck orientation. The main course will be provided by the EDGE Staff. If you would like to bring something, please bring an item from the list below according to your last name:

A-F: Salad (potato, bean, pasta, fruit, etc)      G-K: Bread (rolls, tortillas, etc.)  
L-Q: Desserts (brownies, cookies, etc)      R-Z: Appetizers (chips, dip, veggies, etc)

Please contact Roxanna by 5:00 PM on Wednesday, August 24, 2005, to sign up for orientation. We will be holding orientation at this time only, so please make sure you are able to attend. John must approve any other arrangements.

505-566-3147

[hughesr@sanjuancollege.edu](mailto:hughesr@sanjuancollege.edu)



## Idaho State University/Yellowstone National Park Trip

The next time you look through a dictionary to find the definition of the word "Adventure" you will probably see pictures of the EDGE crew in route to Idaho State University and Yellowstone National Park. What else could you call seven people stuffed into an Expedition for a twelve hour drive, one way, in search of higher education and a wonderful life cultural experience? Some people would call this a bonding experience, others a testament to patience and borderline states of sanity, but we call it the typical EDGE trip.

It began on May 23<sup>rd</sup>, 2005 with six wiley adventurers (EDGE students) and the wise and patient guide (EDGE Director). After snugly fitting into the nomad buggy (Expedition) they traveled north to the land unknown to nearly all of them called Idaho. After arriving in Pocatello they briefly set up camp in a dorm at ISU and set in search of supper, eventually ending up at IHOP (the last place open). The next day their host, Ram Eddings, took them on a tour of a wonderful campus and university; culminating with the crown jewel of their new performing arts center. After tour concluded it was time once again gather up their trappings and set out in the nomad buggy for Yellowstone. However, there was a little side adventure on checking out some rocks and the guide knew the place (the guide loves rocks). This was followed by a venture in fine dining and on to enjoying one of the world's natural wonders, Yellowstone, for two days. Bidding farewell to breathtaking beauty of Yellowstone and the Tetons, the EDGE crew made the trek back to San Juan College, but again enjoyed many scenic landscapes through Montana, Wyoming, Colorado and New Mexico before arriving home.



## EDGE College Visits Scheduled for the Fall Semester

For the fall semester, EDGE is planning to visit two colleges.

- Fort Lewis College in Durango, CO, on Friday, September 16.
- Northern Arizona University in Flagstaff, CO, on Thursday & Friday, October 21 & 22. This will be an overnight trip and we will try to camp at and visit the Grand Canyon.

We always have a wonderful experience visiting Fort Lewis and NAU and are provided with tons of useful information. Mark these date on your calendar if you are interested in attending. Only EDGE participants who are in good standing with the program can go on trips.



## EDGE Rides the Rapids on the San Juan

On July 28, 2005, 10 EDGE participants and 2 staff joined together on an adventurous rafting trip with the "Red Eagle Challenge" based out of the Northern Navajo Medical Center in Shiprock, NM. The Red Eagle Challenge is directed by Orlando, Shar, his daughter, and Teresa.

Before loading onto the raft, Orlando, Shar, and Teresa thoroughly performed a follow-up and checked each and everyone's life jacket. We learned that this is one of the many precautions that need to take place before getting into the raft.

A prayer was done by Brooks for a safe and fun rafting experience as well as a song sung in Navajo by Orlando about the four sacred directions, the three rivers and the rafters. The song is sacred and believed to bring balance and harmony to all aboard.

John led the "Infamous Drowning Raft" with Teresa the captain along with Eppie, Nima, Navid, Casey, and April. In the "Lefty Raft" was Brooks, Orlando the director, his daughter, Kevin, Jamie, Christine, and Katherine. The "Lefty Raft" was launched first, starting out with a slow start so that we may all be educated on how to read the river to avoid any misfortunes. Such as getting stuck on a Sand Bar/Rock Bar, and what white bubbles meant on the surface of the river, to the "V" shape of the flowing river, and how to angle your paddle correctly to get the most effective splash on your opponent. Every element of the flowing river was significant to having a successful, safe and enjoyable trip.

As the "Infamous Drowning Raft" launched and swiftly approached the "Lefty Raft," a water fight began! Splashes everywhere! What a blast everyone had splashing around, being pushed in or rather misjudging a catch of a floating flip-flop. John misjudged the slippery raft and fell overboard as he tried to splash the "Lefty Raft" and lost his glasses. Brooks met a Navajo Crocodile preparing for an attack staring at us as we floated down river. Others lost lip-balms, a flip-flop, shorts, some were able to get a few puffs, and another one of us saw a different side of the moon, while some of us peacefully floated down the river with great tranquility, balance, and peace in mind.

In the end, we all had a new perspective on each other and were able to share our personal experience with the sum of one word; teamwork. For the purpose of this river trip was to build teamwork, togetherness, and build a new relationship with others that we sat next to at the EDGE so that we may all go toward becoming successful.



## New Hearth by Marcia Malby

The old wood stove  
And I  
Have moved;  
Up the hill  
To the bluff,  
To be bluff dwellers,  
My old friend  
And I.  
Half the space,  
We are closer in many ways.  
No recent burns;  
Caution comes with age.  
She's as good as she ever was  
In those long ago days.  
But the new flue  
Is not her equal  
And not worthy of her.  
Silently we suffer smoke  
And backdraft;  
Sometimes, not so silently.  
But we go on.  
Cozy comforts  
And crackling cheer;  
The copper kettle from Kentucky  
Bubbles and steams.  
I've oiled her black iron  
Until she gleams.  
The new hearth is beautiful.  
The beaten brass plate  
From Cairo  
Shines against the brick  
And Christ looks up  
To His Father  
From the mantle.  
Bundles of drying flowers  
And shelves of books  
On the sides  
Frame her space,  
And center mine,  
Where we abide.



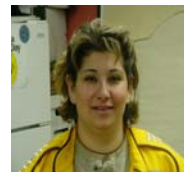
## EDGE Certified Peer Educators (CPEs)

Just like a secondary in sports EDGE has its Certified Peer Educators (CPE). These are exceptional individuals that have been selected by the professional staff after being in the EDGE program for at least a semester and exhibiting multiple constructive skills and abilities in working within the program and with people in general. They are your peer connections within the program. They complete a one day training and continue to meet every two weeks to update on methods to assist others in working through situations and also are supportive of one another. A CPE is assigned a small case load of individuals to take under his/her wing and assist, monitor, guide, or aid in any number of ways. EDGE participants can request to be assigned a CPE when one is available, or a staff may ask a participant if they would like to be assigned a CPE when the staff views that participant could benefit from this particular interaction. Simply put, this is another one of the safety nets in the EDGE program to keep potentially at risk students from slipping through the cracks. EDGE appreciates its CPEs and we know you will too.

YOUR  
CPEs



Casey



Julie



Eppie



Jodi



Bob



Christine

## Happy Thoughts

**"Imagination is more important than knowledge."  
(Albert Einstein)**

**May you have warm words  
on a cold evening,  
a full moon  
on a dark night,  
and the road downhill  
all the way to your door.**

**-DUSTING-**

**A house becomes a home when you can write  
"I love you" on the furniture.**